

# AIRWIN<sup>®</sup>

P N E U M A T I C

[www.airwinpneumatics.in](http://www.airwinpneumatics.in)

AP Series ISO15552 Standard Cylinder



AP11



AP22

Ordering Code

AP	□	—	50	—	100	—	M	—	□
<b>Series Code</b> AP : Standard Double Action Type	<b>Tube Type</b> 11 : Square Type 22 : Mickey Mouse Type		<b>Cylinder Bore</b> Ø 32 Ø 40 Ø 50 Ø 63 Ø 80 Ø 100 Ø 125		<b>Stroke</b>		<b>Magnet Code</b> Blank: Without Magnet M : With Magnet		<b>Fixed Type</b> Blank : Normal type S2 : Double ended Piston Rod ET : Extended Piston Rod Thread EP : Extended Piston Rod F : Female Thread R3 : High Corrosion Protection T1 : Heat Resistance Seals Max.-120°C

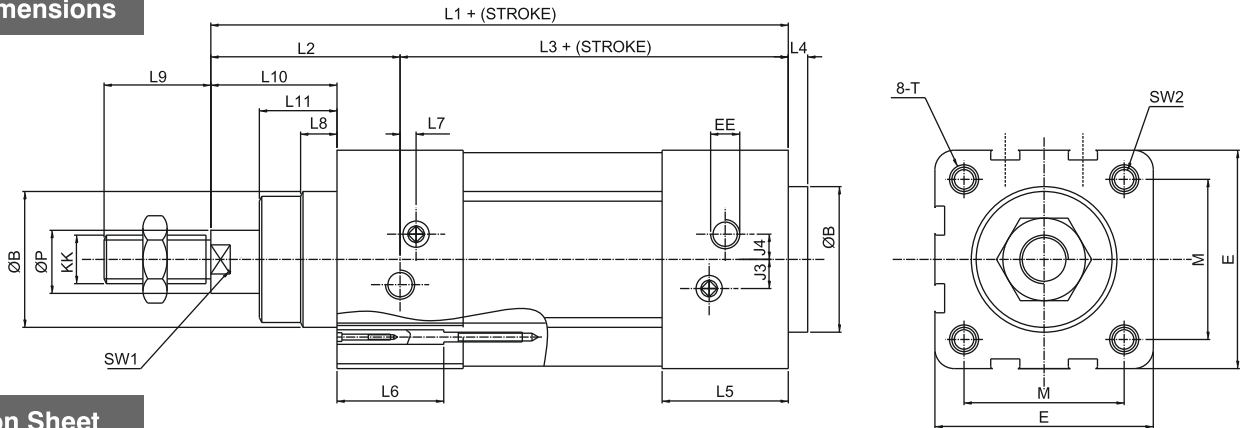
Specification

Bore(mm)	32	40	50	63	80	100	125
Motion Patten	Double Action						
Working Medium	Filtered Air						
Compression Pressure	1.5MPa						
Max. Operating Pressure	1.0MPa						
Min. Operating Pressure	0.2MPas						
Cushioning	Pneumatic cushioning						
Condition Temperature	-5°C to 70°C						
Operating Speed	50-800mm/s						
Port Size	G1/8"	G1/4"		G3/8"		G1/2"	
Stroke Range	10mm - 2200mm (Above 700mm stroke, guide must be used for better performance)						

### AP Series ISO15552 Standard Cylinder

#### Overall Dimensions

Normal Type  
AP11  
AP22



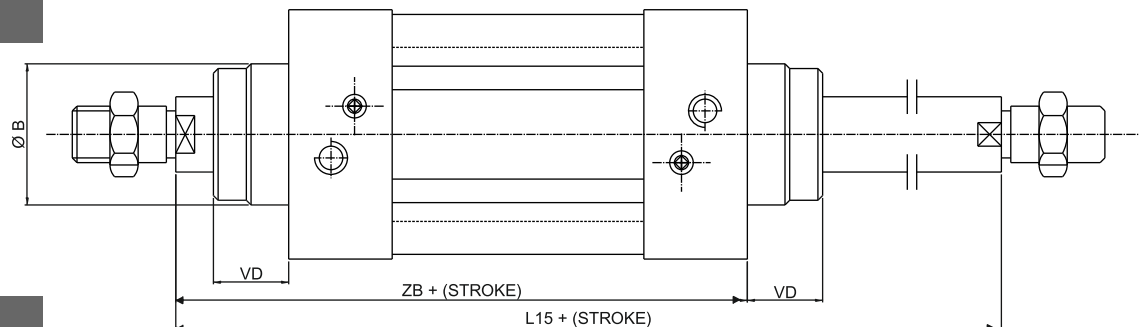
#### Dimension Sheet

Bore	KK	M	P	E	EE	B	T	J3	J4	SW1	SW2
32	M10 X 1.25	32.5	12	45	1/8	30	M6	6	5.2	10	6
40	M12 X 1.25	38	16	54	1/4	35	M6	8	6	13	6
50	M16 X 1.5	46.5	20	64	1/4	40	M8	10	8.5	17	8
63	M16 X 1.5	56.5	20	75	3/8	45	M8	12.4	10	17	8
80	M20 X 1.5	72	25	93	3/8	45	M10	12.5	8	22	10
100	M20 X 1.5	89	25	110	1/2	55	M10	11.8	10	22	10
125	M27 X 2	110	32	134	1/2	60	M12	13	8	28	12

Bore	L1	L2	L3	L4	L5	L6	L7	L8	L9	L10	L11
32	120	40	80	4	26	22	3.3	8	22	26	16
40	135	46	89	4	29.6	22	3.6	10	24	30	20
50	144	54	90	4	30	22	5.1	10	32	37	27
63	158	57	101	4	35.5	22	6.6	10	32	37	27
80	174	65	109	4	36	25	10.5	10	40	46	34.5
100	189	71	118	4	39	25	8	12.5	40	51	38
125	223	95	128	6	44.7	30	14	12.5	54	65	46

#### Overall Dimensions

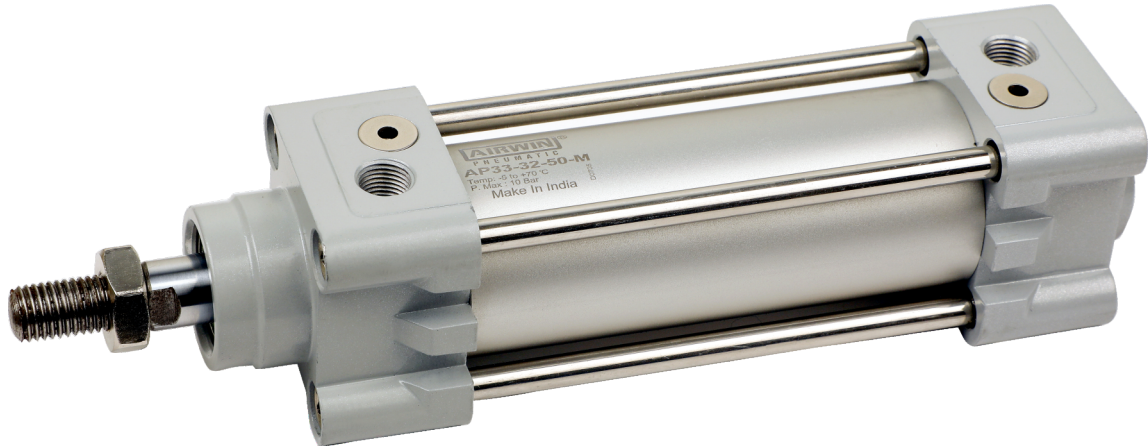
Double Piston Rod Type  
AP11 -- S2  
AP22 -- S2



#### Dimension Sheet

Bore	32	40	50	63	80	100	125
B	30	35	40	45	45	55	60
L15	146	165	181	194	220	240	298
VD	16	20	27	27	34.7	38.2	46
ZB	120	135	144	158	174	189	223

AP Series ISO 15552 Tierod Cylinder



AP33

Ordering Code

AP	33	—	50	—	100	—	M	—	□
<p><b>Series Code</b> AP : Standard Double Action Type</p>	<p><b>Tube Type</b> 33 : ISO Tierod Type</p>		<p><b>Cylinder Bore</b> Ø 32 Ø 40 Ø 50 Ø 63 Ø 80 Ø 100 Ø 125</p>		<p><b>Stroke</b></p>		<p><b>Magnet Code</b> Blank: Without Magnet M : With Magnet</p>		<p><b>Fixed Type</b> Blank : Normal type S2 : Double ended Piston Rod ET : Extended Piston Rod Thread EP : Extended Piston Rod F : Female Thread R3 : High Corrosion Protection T1 : Heat Resistance Seals Max.-120°C</p>

Specification

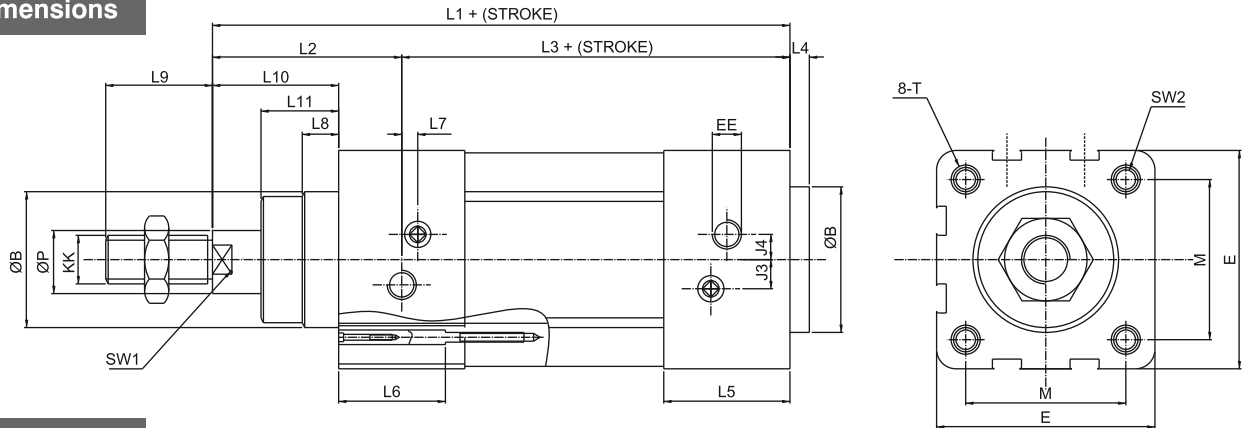
Bore(mm)	32	40	50	63	80	100	125
Motion Patten	Double Action						
Working Medium	Filtered Air						
Compression Pressure	1.5MPa						
Max. Operating Pressure	1.0MPa						
Min. Operating Pressure	0.2MPas						
Cushioning	Pneumatic cushioning						
Condition Temperature	-5°C to 70°C						
Operating Speed	50-800mm/s						
Port Size	G1/8"	G1/4"		G3/8"		G1/2"	
Stroke Range	10mm - 2200mm (Above 700mm stroke, guide must be used for better performance)						



### AP Series ISO 15552 Tierod Cylinder

#### Overall Dimensions

Normal Type  
AP33



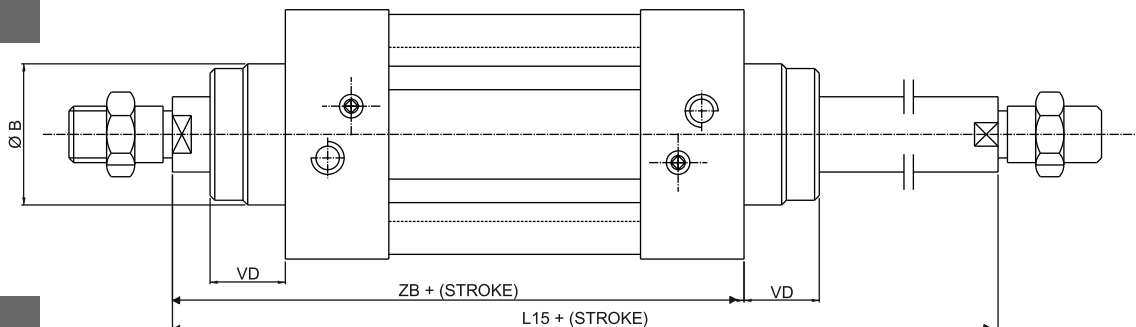
#### Dimension Sheet

Bore	KK	M	P	E	EE	B	T	J3	J4	SW1	SW2
32	M10 X 1.25	32.5	12	45	1/8	30	M6	6	5.2	10	6
40	M12 X 1.25	38	16	54	1/4	35	M6	8	6	13	6
50	M16 X 1.5	46.5	20	64	1/4	40	M8	10	8.5	17	8
63	M16 X 1.5	56.5	20	75	3/8	45	M8	12.4	10	17	8
80	M20 X 1.5	72	25	93	3/8	45	M10	12.5	8	22	10
100	M20 X 1.5	89	25	110	1/2	55	M10	11.8	10	22	10
125	M27 X 2	110	32	134	1/2	60	M12	13	8	28	12

Bore	L1	L2	L3	L4	L5	L6	L7	L8	L9	L10	L11
32	120	40	80	4	26	22	3.3	8	22	26	16
40	135	46	89	4	29.6	22	3.6	10	24	30	20
50	144	54	90	4	30	22	5.1	10	32	37	27
63	158	57	101	4	35.5	22	6.6	10	32	37	27
80	174	65	109	4	36	25	10.5	10	40	46	34.5
100	189	71	118	4	39	25	8	12.5	40	51	38
125	223	95	128	6	44.7	30	14	12.5	54	65	46

#### Overall Dimensions

Double Piston Rod Type  
AP11 - - S2  
AP22 - - S2



#### Dimension Sheet

Bore	32	40	50	63	80	100	125
B	30	35	40	45	45	55	60
L15	146	165	181	194	220	240	298
VD	16	20	27	27	34.7	38.2	46
ZB	120	135	144	158	174	189	223

AP44 Series Standard Cylinder



AP44

Ordering Code

AP44	—	50	—	100	—	M	—	□
<p><b>Series Code</b> AP44 : Standard double Action (Tie-rod Type)</p>		<p><b>Cylinder Bore</b> Ø 32 Ø 40 Ø 50    Ø 125 Ø 63    Ø 160 Ø 80    Ø 200 Ø 100    Ø 250</p>		<p><b>Stroke</b></p>		<p><b>Magnet Code</b> Blank: Without Magnet M : With Magnet</p>		<p><b>Fixed Type</b> Blank : Normal type S2 : Double ended Piston Rod ET : Extended Piston Rod Thread EP : Extended Piston Rod F : Female Thread R3 : High Corrosion Protection T1 : Heat Resistance Seals Max.-120°C</p>

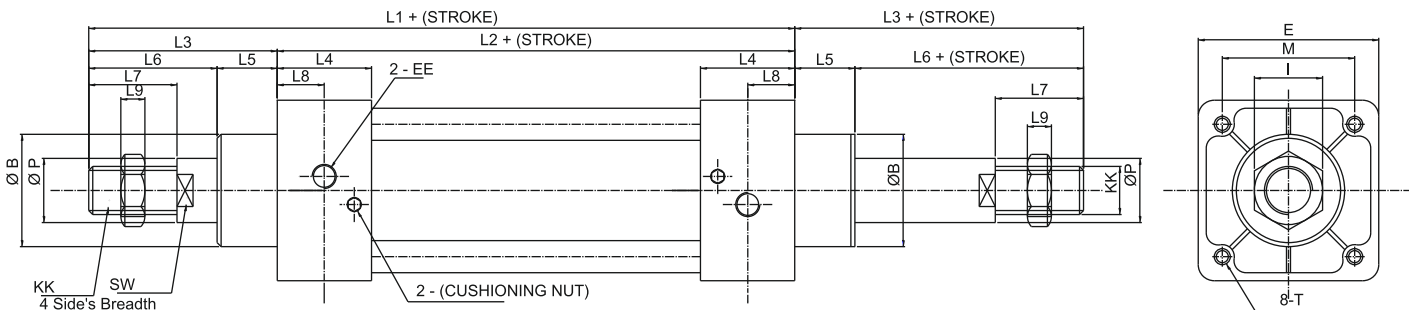
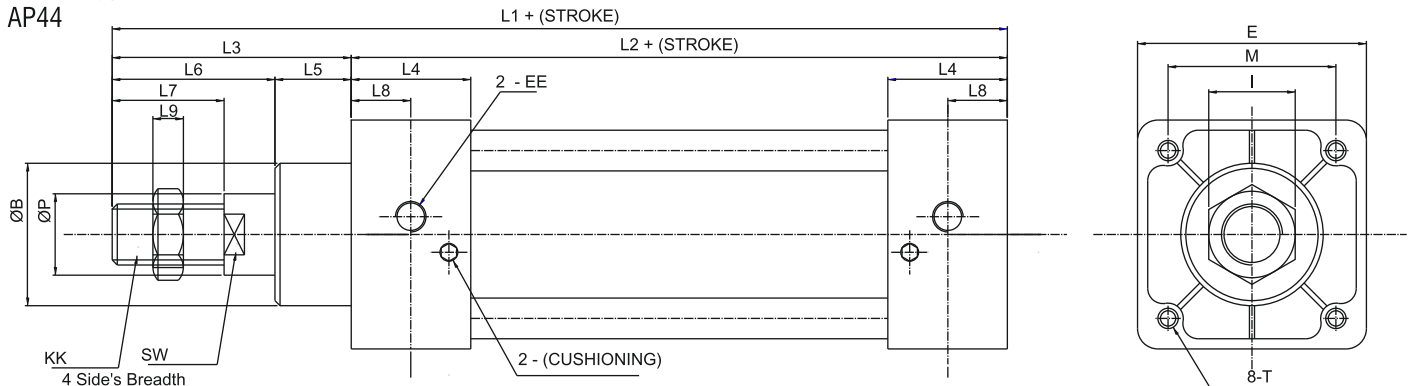
Specification

Bore(mm)	32	40	50	63	80	100	125	160	200
Motion Pattern	Double Action								
Working Medium	Air								
Operating Pressure Range	0.1-0.9kgf/cm <sup>2</sup>								
Ensured Pressure Range	1.35Mpa								
Condition Temperature	-5°C to +70°C								
Operating Speed Range	300-800mm/s								
Cushioning	Pneumatic Cushioning								
Port Size	G1/8"	G1/4"	G3/8"	G1/2"		G3/4"			
Stroke Range	10mm - 2200mm (Above 700mm stroke, guide must be used for better performance)								

## AP44 Series Standard Cylinder

### Overall Dimensions

Normal Type  
AP44

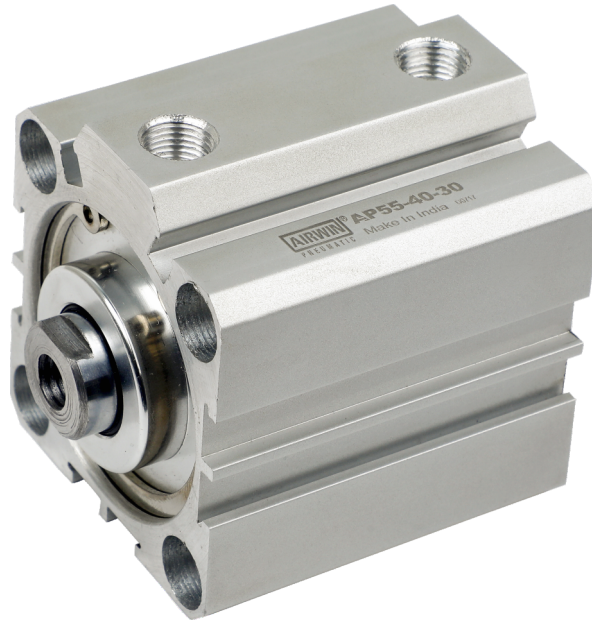


### Dimension Sheet

Bore/Symbol	KK	EE	T	E	M	P	SW
32	M10 X 1.25	G1/8"	M6	45	33	12	10
40	M12 X 1.25	G1/4"	M6	50	37	16	14
50	M16 X 1.5	G1/4"	M8	62	47	20	17
63	M16 X 1.5	G3/8"	M8	75	56	20	17
80	M20 X 1.5	G3/8"	M10	94	70	25	22
100	M20 X 1.5	G1/2"	M10	112	84	25	22
125	M27 X 2	G1/2"	M12	140	110	32	28
160	M36 X 2	G3/4"	M16	180	140	40	36
200	M36 X 2	G3/4"	M16	220	175	40	36

Bore/Symbol	L1	L2	L3	L4	L5	L6	L7	L8	L9	I	B
32	140	93	47	27.5	15	32	22	13.7	6	17	25.5
40	141.5	93	48.5	27.5	15	33.5	24	13.5	7	17	30
50	150	93	57	27.5	15	42	32	13.5	8	23	36
63	153	96	57	27.5	15	42	32	13.5	8	23	36
80	183	108	75	33	21	54	40	16.5	10	26	47
100	183	108	75	33	21	54	40	16.5	10	26	47
125	239	136	103	40	32	71	54	20	10	36	56
160	289	166	123	50	30	93	72	25	16	50	65
200	337	180	157	50	57	100	72	25	16	50	75

**AP55 Series Compact Cylinder**



**AP55**

**Ordering Code**

<b>AP55</b>	—	<b>32</b>	—	<b>50</b>	—	<b>M</b>	—	
<p>Series Code AP55 : Standard Double Action (Compact Type)</p>		<p><b>Cylinder Bore</b>                  Ø 12    Ø 40                  Ø 16    Ø 50                  Ø 20    Ø 63                  Ø 25    Ø 80                  Ø 32    Ø 100</p>		<p><b>Stroke</b></p>		<p><b>Magnet Code</b>                  Blank: Without Magnet                  M : With Magnet</p>		<p><b>Fixed Type</b>                  Blank : Normal type (Female Thread)                  S2 : Double ended Piston Rod                  ET : Extended Piston Rod Thread                  EP : Extended Piston Rod                  MT : Male Thread                  R3 : High Corrosion Protection                  T1 : Heat Resistance Seals Max. -120°C</p>

**Specification**

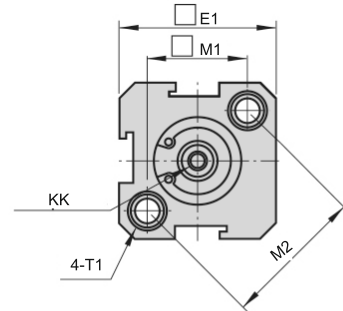
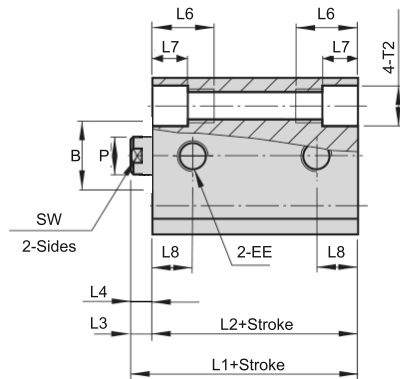
Bore (mm)	12	16	20	25	32	40	50	63	80	100
Acting Type	Double Action									
Working Medium	Filtered Air									
Operation Pressure	0.1-1.0 Mpa (1.0 - 10.0 bar)									
Temperature	-5°C to +70°C									
Operating Speed Range	30 - 500 mm/s									
Port Size	M5x0.8				1/8"		1/4"		3/8"	
Max. Stroke	70	70	100	100	150	150	150	150	150	150

## AP55 Series Compact Cylinder

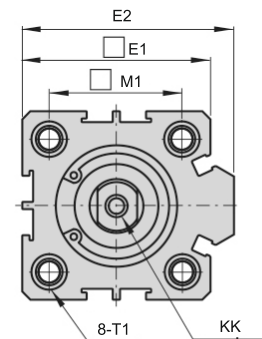
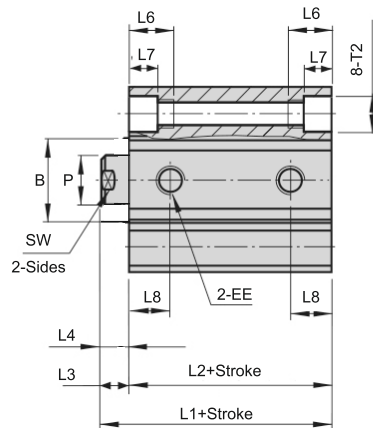
### Overall Dimensions

Normal Type  
(Female Thread)

Ø 12- Ø 16



Ø 20- Ø 100



### Dimension Sheet

Bore	KK	EE	T1	T2	M1	M2	E1	E2	P	SW
12	M3x0.5	M5x0.8	M5x0.8	6.5	16.2	23	25	-	6	5
16	M3x0.5	M5x0.8	M5x0.8	6.5	19.8	28	29	-	6	5
20	M4x0.7	M5x0.8	M5x0.8	6.5	24	-	34	36	8	6
25	M5x0.8	M5x0.8	M6x1.0	8.2	28	-	40	42	10	8
32	M6x1.0	1/8"	M6x1.0	8.2	34	-	44	50	12	10
40	M8x1.25	1/8"	M8x1.25	10	40	-	52	58.5	16	14
50	M10x1.5	1/4"	M8x1.25	11	48	-	62	71.5	20	17
63	M10x1.5	1/4"	M8x1.25	11	60	-	75	84.5	20	17
80	M14x1.5	3/8"	M12x1.75	14	74	-	94	104	25	22
100	M18x1.5	3/8"	M14x2.0	17.5	90	-	114	124	32	27

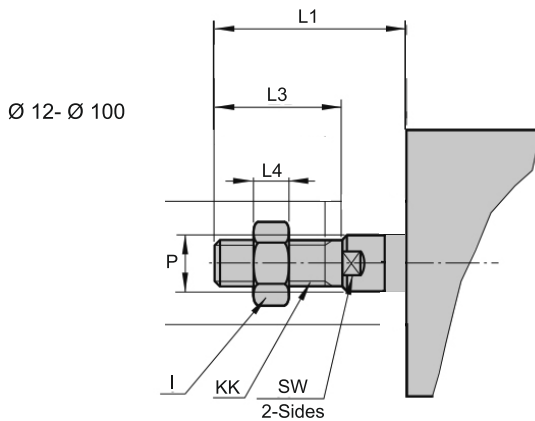
Bore	L1 Non Magnet	L2 Non Magnet	L1 Magnet	L2 Magnet	L3	L4	L6	L7	L8	B
12	22	18	32	28	5	4	12	4.5	6.3	10.2
16	24	20	34	30	5.5	4	12	4.5	7.3	11
20	25	21	35	31	5.5	4	14	4.5	7.5	15
25	27	23	37	33	6	4	15	5.5	8	17
32	31.5	27.5	41.5	37.5	7	4	16	5.5	9	22
40	33	29	43	39	7	4	20	7.5	10	28
50	37	32	47	42	9	5	25	8.5	10.5	38
63	41	36	51	46	9	5	25	8.5	11.8	40
80	52	46	62	56	11	6	25	10.5	14.5	45
100	63	56	73	66	12	7	30	13	20.5	55



## AP55 Series Compact Cylinder

### Overall Dimensions

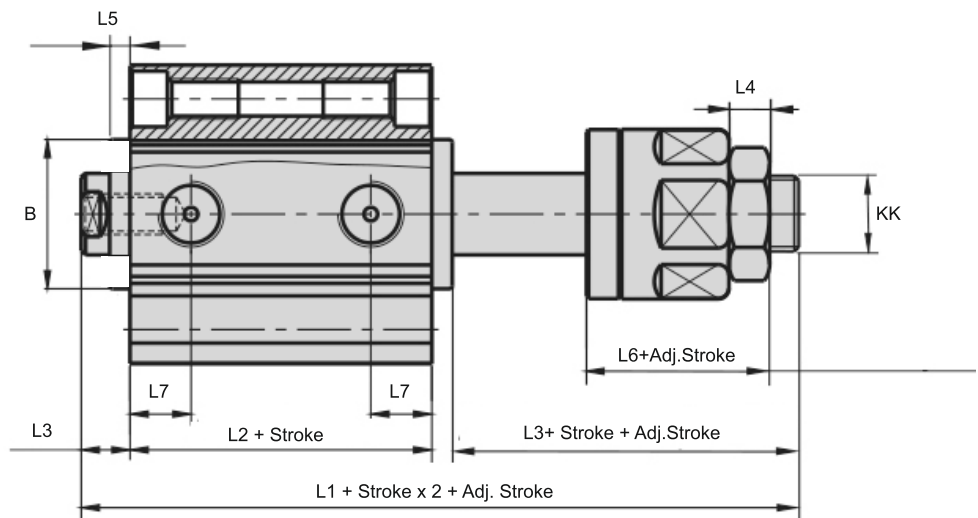
(Male Thread Type)



Bore	L1	L2	L3	L4	L5	B	P	KK	I	SW
12	17	16	12	4	1	10.2	6	M5x0.8	8	5
16	17.5	16	12	4	1.5	11	6	M5x0.8	8	5
20	20.5	19	15	5	1.5	16	8	M6x1.0	10	6
25	23	21	17	6	2	17	10	M8x1.25	12	8
32	25	22	18	6	3	22	12	M10x1.25	17	10
40	35	32	28	7	3	28	16	M14x1.5	17	14
50	37	33	28	8	4	38	20	M18x1.5	23	17
63	37	33	28	8	4	40	20	M18x1.5	23	17
80	44	39	33	10	5	45	25	M22x1.5	26	22
100	50	45	38	10	5	55	32	M26x1.5	36	28

### Overall Dimensions

(Adjustable Stroke Type)



Bore	L1 Non Magnet	L2 Non Magnet	L1 Magnet	L2 Magnet	L3	L4	L5	L6	L7	B
12	40	17	50	27	17	4	1	17	6.3	10.2
16	42.5	18.5	52.5	28.5	17	4	1.5	17	7.3	11
20	47.5	19.5	57.5	29.5	21	5	1.5	21	7.5	15
25	54	21	64	31	25	6	2	25	8	17
32	61.5	24.5	71.5	34.5	27	6	3	27	9	22
40	64	26	74	36	28	7	3	28	10	28
50	70	28	80	38	29	8	4	29	10.5	38
63	74	32	84	42	29	8	4	29	11.8	40
80	92.5	41	102.5	51	35.5	10	5	35.5	14.5	45
100	110.5	51	120.5	61	42.5	13.5	5	42.5	20.5	55

AP66 Series Aluminium Round Cylinder



AP66

Ordering Code

AP66	—	32	—	50	—	M	—	□
<p><b>Series Code</b> AP66 : Standard Double Action (Round Type)</p>		<p><b>Cylinder Bore</b> Ø 16 Ø 20 Ø 25 Ø 32 Ø 40</p>		<p><b>Stroke</b></p>		<p><b>Magnet Code</b> Blank: Without Magnet M : With Magnet</p>		<p><b>Fixed Type</b> Blank : Normal type (Male Thread) ET : Extended Piston Rod Thread EP : Extended Piston Rod F : Female Thread R3 : High Corrosion Protection T1 : Heat Resistance Seals Max. -120°C</p>

Specification

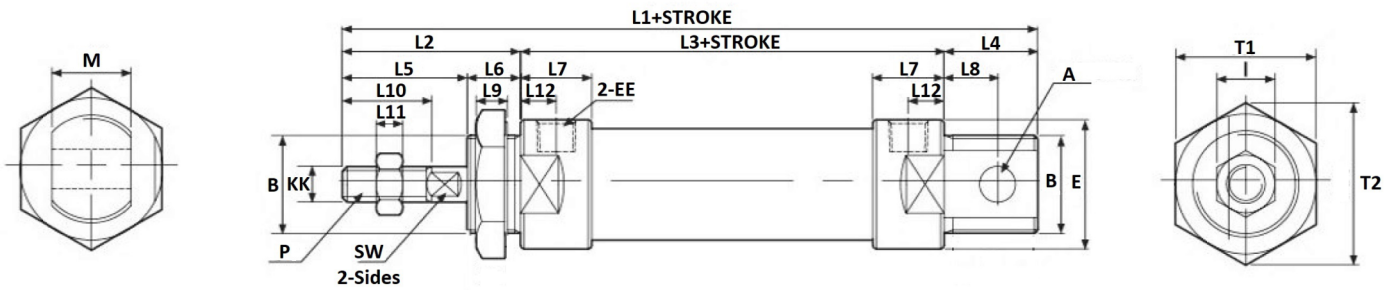
Bore (mm)	16	20	25	32	40
Acting Type	Double Action				
Working Medium	Filtered Air				
Operation Pressure	0.1-1.0 Mpa (1.0 - 10.0 bar)				
Temperature	-5°C to +70°C				
Operating Speed Range	30 - 200 mm/s				
Port Size	M5x0.8	1/8"	1/8"	1/8"	1/4"
Max. Stroke	100	100	150	200	200

## AP66 Series Aluminium Round Cylinder

### Overall Dimensions

Normal Type  
(Male Thread)

Ø 16 - Ø 40

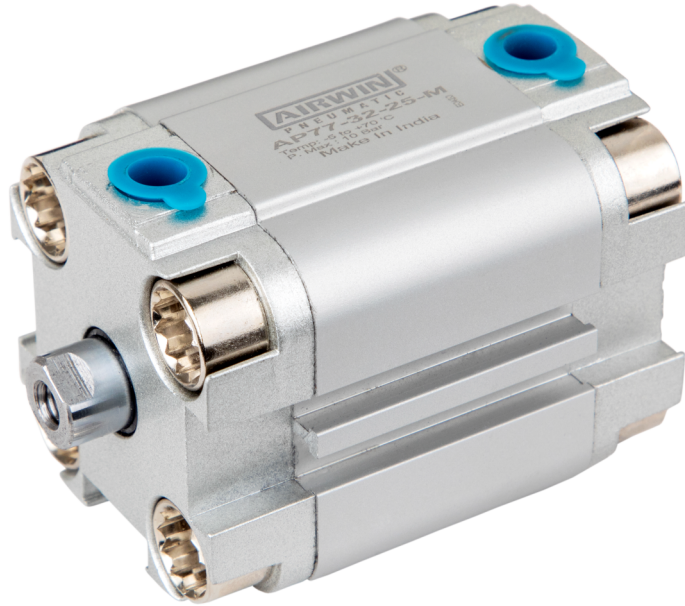


### Dimension Sheet

Bore/Symbol	KK	EE	A	B	E	I	M	P	T1	T2	SW	
16	M6X1	M5	6	M16X1.5	24	10	12	6	22	25	5	
20	M8X1.25	G1/8"	8	M22X1.5	29	12	16	8	29	33	6	
25	M10X1.25	G1/8"	8	M22X1.5	34	17	16	10	29	33	8	
32	M10X1.25	G1/8"	10	M24X2	39.5	17	16	12	32	37	10	
40	M12X1.25	G1/4"	12	M30X2	49.5	17	20	16	41	37	14	

Bore/Symbol	L1	L2	L3	L4	L5	L6	L7	L8	L9	L10	L11	L12
16	110	38	56	16	22	16	10	9	6	16	5	5
20	131	40	70	21	28	12	16	12	7	20	6	8
25	135	44	70	21	30	14	16	12	7	22	6	8
32	141	44	70	27	30	14	16	15	8	22	6	8
40	165	46	92	27	32	14	22	15	9	24	7	11

AP77 Series ISO 6431 Compact Cylinder



AP77

Ordering Code

AP77	—	32	—	50	—	M	—	
Series Code AP77 : Standard Double Action (ISO Compact Type)		<b>Cylinder Bore</b> Ø 16 Ø 20 Ø 25 Ø 32 Ø 40 Ø 50 Ø 63 Ø 80		<b>Stroke</b>		<b>Magnet Code</b> Blank: Without Magnet M : With Magnet		<b>Fixed Type</b> Blank : Normal type (Female Thread) ET : Extended Piston Rod Thread EP : Extended Piston Rod MT : Male Thread R3 : High Corrosion Protection T1 : Heat Resistance Seals Max. -120°C

Specification

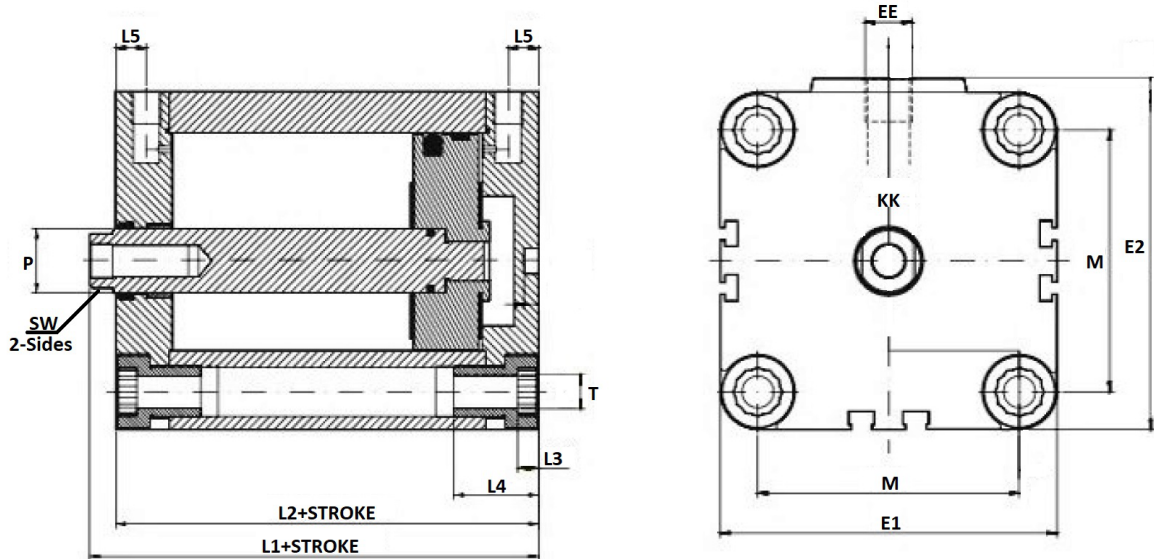
Bore (mm)	16	20	25	32	40	50	63	80	
Acting Type	Double Action								
Working Medium	Filtered Air								
Operation Pressure	0.1-1.0 Mpa (1.0 - 10.0 bar)								
Temperature	-5°C to +70°C								
Operating Speed Range	30 - 200 mm/s								
Port Size	M5x0.8	M5x0.8	M5x0.8	1/8"	1/8"	1/8"	1/8"	1/8"	
Max. Stroke	100	100	100	100	120	125	150	150	

## AP77 Series ISO 6431 Compact Cylinder

### Overall Dimensions

Normal Type  
(Female Thread)

Ø 16 - Ø 80



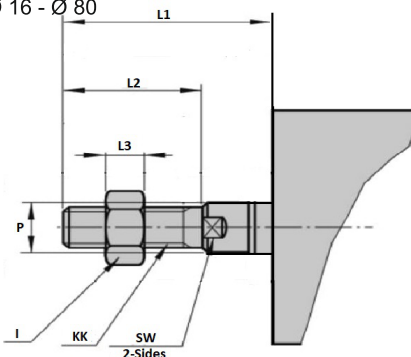
### Dimension Sheet

Bore/Symbol	KK	EE	E1	E2	M	P	T	L1	L2	L3	L4	L5	SW
16	M4X0.7	M5X0.8	29	30	18	8	M4X0.7	44	38	4	18.5	8	6
20	M5X0.8	M5X0.8	36	37.5	22	10	M5X0.8	43.5	38	4	18.5	8	8
25	M5X0.8	M5X0.8	40	41.5	26	10	M5X0.8	46	39.5	4	18.5	8	8
32	M6X1	G1/8"	50	52	32	12	M6X1	51.5	44.5	5	22	8	10
40	M6X1	G1/8"	60	62.5	42	12	M6X1	52	45.5	5	22	8	10
50	M8X1.25	G1/8"	68	70.8	50	16	M8X1.25	54.5	46.5	5	22	8	14
63	M8X1.25	G1/8"	88	92	62	16	M10X1.25	56	50	6	26	8	14
80	M10X1.5	G1/8"	107	111	82	20	M10X1.25	62	56	6	26	8.5	17

### Overall Dimensions

(Male Thread Type)

Ø 16 - Ø 80



Bore/Symbol	L1	L2	L3	KK	P	I	SW
16	26	20	6	M8X1.25	8	12	6
20	27.5	22	6	M10X1.25	10	17	8
25	28.5	22	6	M10X1.25	10	17	8
32	29	22	6	M10X1.25	12	17	10
40	28.5	22	6	M10X1.25	12	17	10
50	32	24	7	M12X1.25	16	19	14
63	30	24	7	M12X1.25	16	19	14
80	38	32	8	M16X1.5	20	23	17



**CYLINDER ACCESSORIES**



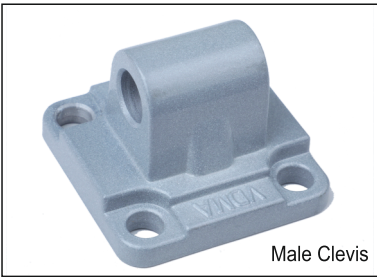
Rod Eye

Order Code	Thread Size
AR32	M10x1.25
AR40	M12X1.25
AR50/63	M16X1.5
AR80/100	M20X1.5
AR125	M27X2
AR160/200	M36X2



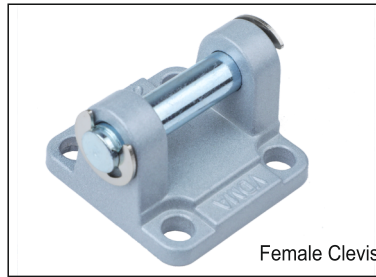
FORK Y+CLIP

Order Code	Thread Size
AF32	M10x1.25
AF40	M12X1.25
AF50/63	M16X1.5
AF80/100	M20X1.5
AF125	M27X2



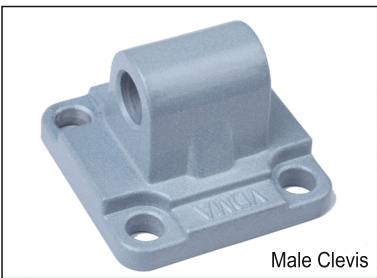
Male Clevis

Product	Order Code
Male Clevis	AP11/22/33-32-MC
Male Clevis	AP11/22/33-40-MC
Male Clevis	AP11/22/33-50-MC
Male Clevis	AP11/22/33-63-MC
Male Clevis	AP11/22/33-80-MC
Male Clevis	AP11/22/33-100-MC
Male Clevis	AP11/22/33-125-MC



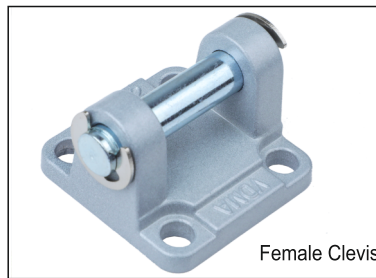
Female Clevis

Product	Order Code
Female Clevis	AP11/22/33-32-FC
Female Clevis	AP11/22/33-40-FC
Female Clevis	AP11/22/33-50-FC
Female Clevis	AP11/22/33-63FC
Female Clevis	AP11/22/33-80-FC
Female Clevis	AP11/22/33-100-FC
Female Clevis	AP11/22/33-125-FC



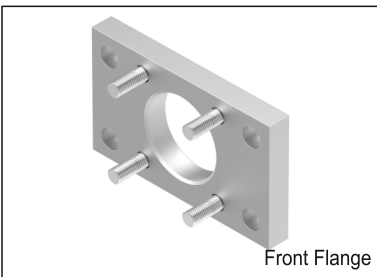
Male Clevis

Product	Order Code
Male Clevis	AP44-32-MC
Male Clevis	AP44-40-MC
Male Clevis	AP44-50-MC
Male Clevis	AP44-63-MC
Male Clevis	AP44-80-MC
Male Clevis	AP44-100-MC
Male Clevis	AP44-125-MC



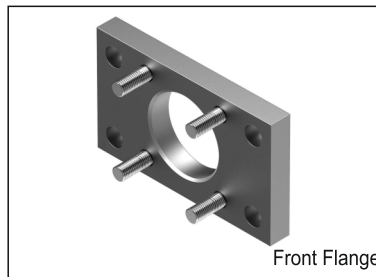
Female Clevis

Product	Order Code
Female Clevis	AP44-32-FC
Female Clevis	AP44-40-FC
Female Clevis	AP44-50-FC
Female Clevis	AP44-63-FC
Female Clevis	AP44-80-FC
Female Clevis	AP44-100-FC
Female Clevis	AP44-125-FC



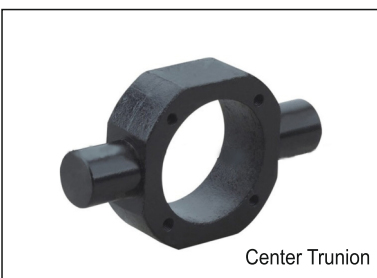
Front Flange

Product	Order Code
Front Flange	AP11/22/33-32-FF
Front Flange	AP11/22/33-40-FF
Front Flange	AP11/22/33-50-FF
Front Flange	AP11/22/33-63-FF
Front Flange	AP11/22/33-80-FF
Front Flange	AP11/22/33-100-FF
Front Flange	AP11/22/33-125-FF



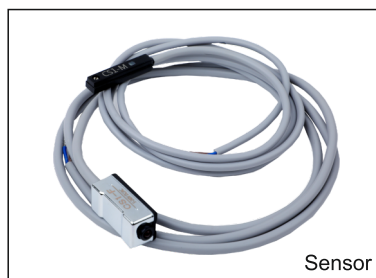
Front Flange

Product	Order Code
Front Flange	AP44-32-FF
Front Flange	AP44-40-FF
Front Flange	AP44-50-FF
Front Flange	AP44-63-FF
Front Flange	AP44-80-FF
Front Flange	AP44-100-FF
Front Flange	AP44-125-FF
Front Flange	AP44-160-FF
Front Flange	AP44-200-FF



Center Trunion

Product	Order Code
Center Trunion	AP44-32-TC
Center Trunion	AP44-40-TC
Center Trunion	AP44-50-TC
Center Trunion	AP44-63-TC
Center Trunion	AP44-80-TC
Center Trunion	AP44-100-TC
Center Trunion	AP44-125-TC
Center Trunion	AP44-160-TC
Center Trunion	AP44-200-TC



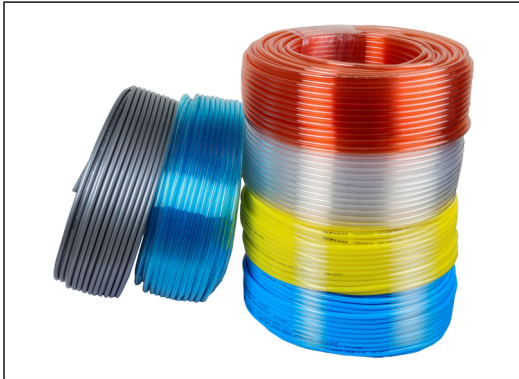
Sensor

Product	Order Code
AP11/22/77	AP-31R-1M
AP11/22/77 (3 wire)	AP-31P-1M
AP33/44	CS1-F
AP55	CS1-J
AP33/44 Clamp	CS1-F Clamp

**PU TUBE**

**How to Order**

AP00 -   -   -



TUBE COLOR	
BL	BLUE
BK	BLACK
BT	TPT.BLUE
TP	TRANSPARENT
RD	RED
RT	TPT.RED
YL	YELLOW
SL	SILVER

TUBE OD	
04	Ø 4
06	Ø 6
08	Ø8
10	Ø10
12	Ø12
16	Ø16

TUBE ID	
25	2.5
04	4
05	5
55	5.5
06	6
65	6.5
08	8
12	12

**TECHINICAL SPECIFICATIONS**

Tube Size	4x2.5	6x4	8x5	8x5.5	8x6	10x6.5	10x8	12x8
O.D.	4mm	6.0mm	8.0mm	8.0mm	8.0mm	10.0mm	10.0mm	12.0mm
I.D.	2.5mm	4.0mm	5 mm	5.5 mm	6 mm	6.5 mm	8.0 mm	8.0 mm
Working Temperature	5 to 60	5 to 60	5 to 60	5 to 60	5 to 60	5 to 60	5 to 60	5 to 60
Max. Working Pressure (at 23° C)	10 bar	10 bar	10 bar	10 bar	07 bar	10 bar	07 bar	10 bar
Min. Burst Pressure (at 23° C)	39 bar	33 bar	36 bar	36 bar	36 bar	33 bar	30 bar	30 bar
Min. Bend Radius	10 MM	20 MM	30MM	30MM	30MM	35MM	35MM	40MM

**How to Order**

APS0 -   -   -



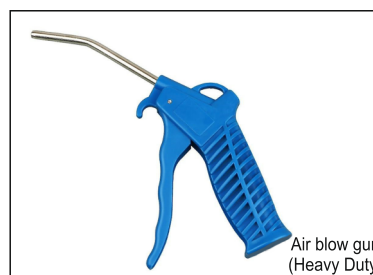
TUBE COLOR	
BL	BLUE
BK	BLACK
BT	TPT.BLUE
TP	TRANSPARENT
RD	RED
RT	TPT.RED
YL	YELLOW
SL	SILVER

TUBE OD	
04	Ø 4
06	Ø 6
08	Ø8
10	Ø10
12	Ø12
16	Ø16

Working Length	
03	3 Mtr.
05	5 Mtr.
10	10 Mtr.
15	15 Mtr.
20	20 Mtr.



Product	Order Code
Air blow gun	APAG-01



Product	Order Code
Air blow gun (Heavy Duty)	APAG-02

**SOLENOID VALVE**

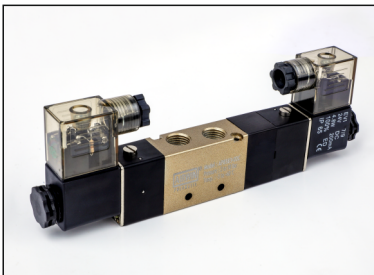
**TECHINICAL SPECIFICATIONS**

Type	3/2, 5/2 & 5/3
Flow Rate	1/4" - 1200 LPM / 1/2" 3500 LPM @ Inlet Pressure : 6 bar
Working Pressure	2-10 Bar
Ambient Tem.	- 5 to 60°
MOC	Aluminium
Coil Voltage	24 V - 220 V
Action Frequency	Max. 5 Cycle / Second
Coil Protection Class	F Class / IP65



**How to Order**

Series	Coil	Position Type	Port	Coil Voltage
24	01-Single	52-5/2	02-1/4"	V024-24V
24	02-Double	53-5/3	-	V220-220V



**How to Order**

Series	Coil	Position Type	Port	Coil Voltage
AP85	81-Single	52-5/2	02-1/4"	V024-24V
-	82-Double	53-5/3	04-1/2"	V220-220V



**How to Order**

Series	Opreting	Position Type	Port
AP8581	HL-Hand Lever	52-5/2	02-1/4"
-	-	53-5/3	04-1/2"



Model	Port	Model	Port
AP8581-02-MF	2 Valve	AP8581-07-MF	7 Valve
AP8581-03-MF	3 Valve	AP8581-08-MF	8 Valve
AP8581-04-MF	4 Valve	AP8581-10-MF	10 Valve
AP8581-05-MF	5 Valve	AP8581-12-MF	12 Valve
AP8581-06-MF	6 Valve	Closing Plate	Avilable

\* Sutitable for 2400 & AP85 Series Solenoid Valve



Product	Order Code
Non-Return Valve 1/8"	ANV-01
Non-Return Valve 1/4"	ANV-02
Non-Return Valve 3/8"	ANV-03
Non-Return Valve 1/2"	ANV-04



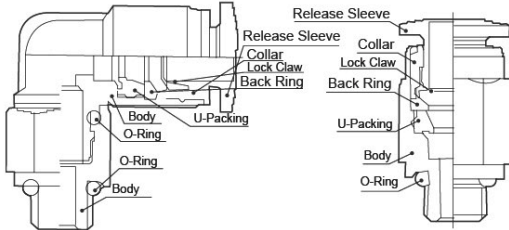
Product	Order Code
Blocking Valve 1/8"	APN-01
Blocking Valve 1/4"	APN-02
Blocking Valve 3/8"	APN-03
Blocking Valve 1/2"	APN-04

ONE-TOUCH PUSH FITTINGS - AP10 SERIES

One-touch IN/OUT Connection.

Specifications

- Fast Installation, Simple and Smart, Space - Saving.
- in a variety of models, Suitable for any tubes.
- Even after installation, the direction of the tube can be changed freely.
- Elliptical release ring design easy to dismantle.
- Once inserted, the tube would not easily loose.
- All the taper pipe threads are pre-coated sealant, perfect sealing performance.
- With Hex type, convenient to installation even the Narrow place.



Tubing Material	Polyurethane, Nylon, Soft Nylon,
Tubing O.D.	ø4, ø6, ø8, ø10, ø12, ø14, ø16
Fluid	Air / Water
Operating Pressure Range	-100 kPa to 1 MPa
Ambient and Fluid Temperature	-5 to 60°, Water: 0 to 40°C
Seal on the Threads	with O ring
Body	Brass
Seal, O-ring	NBR



Male Connector

Order Code	ØD	Thread
AP10-M-04-M5	4	M5
AP10-M-04-01	4	G1/8
AP10-M-04-02	4	G1/4
AP10-M-06-M5	6	M5
AP10-M-06-01	6	G1/8
AP10-M-06-02	6	G1/4
AP10-M-06-03	6	G3/8
AP10-M-06-04	6	G1/2
AP10-M-08-M5	8	M5
AP10-M-08-01	8	G1/8

Order Code	ØD	Thread
AP10-M-08-02	8	G1/4
AP10-M-08-03	8	G3/8
AP10-M-08-04	8	G1/2
AP10-M-10-01	10	G1/8
AP10-M-10-02	10	G1/4
AP10-M-10-03	10	G3/8
AP10-M-10-04	10	G1/2
AP10-M-12-01	12	G1/8
AP10-M-12-02	12	G1/4
AP10-M-12-03	12	G3/8

Order Code	ØD	Thread
AP10-M-12-04	12	G1/2
AP10-M-14-03	14	G3/8
AP10-M-14-04	14	G1/2
AP10-M-14-06	14	G3/4
AP10-M-16-03	16	G3/8
AP10-M-16-04	16	G1/2
AP10-M-16-06	16	G3/4



Female Connector

Order Code	ØD	Thread
AP10-F-04-M5	4	M5
AP10-F-04-01	4	G1/8
AP10-F-04-02	4	G1/4
AP10-F-06-M5	6	M5
AP10-F-06-01	6	G1/8
AP10-F-06-02	6	G1/4
AP10-F-06-03	6	G3/8

Order Code	ØD	Thread
AP10-F-06-04	6	G1/2
AP10-F-08-01	8	G1/8
AP10-F-08-02	8	G1/4
AP10-F-08-03	8	G3/8
AP10-F-08-04	8	G1/2
AP10-F-10-01	10	G1/8
AP10-F-10-02	10	G1/4

Order Code	ØD	Thread
AP10-F-10-03	10	G3/8
AP10-F-10-04	10	G1/2
AP10-F-12-01	12	G1/8
AP10-F-12-02	12	G1/4
AP10-F-12-03	12	G3/8
AP10-F-12-04	12	G1/2



Male Elbow Connector

Order Code	ØD	Thread
AP10-L-04-M5	4	M5
AP10-L-04-01	4	G1/8
AP10-L-04-02	4	G1/4
AP10-L-06-M5	6	M5
AP10-L-06-01	6	G1/8
AP10-L-06-02	6	G1/4
AP10-L-06-03	6	G3/8

Order Code	ØD	Thread
AP10-L-06-04	6	G1/2
AP10-L-08-01	8	G1/8
AP10-L-08-02	8	G1/4
AP10-L-08-03	8	G3/8
AP10-L-08-04	8	G1/2
AP10-L-10-01	10	G1/8
AP10-L-10-02	10	G1/4

Order Code	ØD	Thread
AP10-L-10-03	10	G3/8
AP10-L-10-04	10	G1/2
AP10-L-12-01	12	G1/8
AP10-L-12-02	12	G1/4
AP10-L-12-03	12	G3/8
AP10-L-12-04	12	G1/2



Male Branch Tee

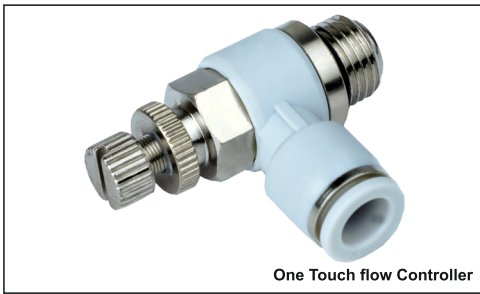
Order Code	ØD	Thread
AP10-BT-04-M5	4	M5
AP10-BT-04-01	4	G1/8
AP10-BT-04-02	4	G1/4
AP10-BT-06-M5	6	M5
AP10-BT-06-01	6	G1/8
AP10-BT-06-02	6	G1/4
AP10-BT-06-03	6	G3/8

Order Code	ØD	Thread
AP10-BT-06-04	6	G1/2
AP10-BT-08-01	8	G1/8
AP10-BT-08-02	8	G1/4
AP10-BT-08-03	8	G3/8
AP10-BT-08-04	8	G1/2
AP10-BT-10-01	10	G1/8
AP10-BT-10-02	10	G1/4

Order Code	ØD	Thread
AP10-BT-10-03	10	G3/8
AP10-BT-10-04	10	G1/2
AP10-BT-12-01	12	G1/8
AP10-BT-12-02	12	G1/4
AP10-BT-12-03	12	G3/8
AP10-BT-12-04	12	G1/2



ONE-TOUCH PUSH FITTINGS - AP10 SERIES

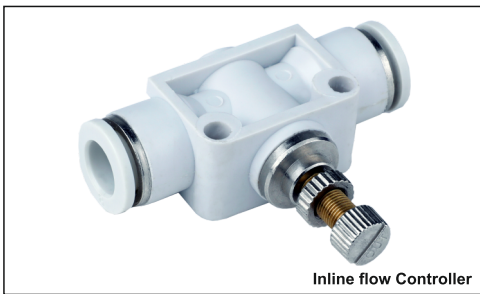


One Touch flow Controller

Order Code	ØD	Thread
<del>AP10-FC-04-M5</del>	<del>4</del>	<del>M5</del>
<del>AP10-FC-04-G1/8</del>	<del>4</del>	<del>G1/8</del>
<del>AP10-FC-04-G1/4</del>	<del>4</del>	<del>G1/4</del>
<del>AP10-FC-06-M5</del>	<del>6</del>	<del>M5</del>
<del>AP10-FC-06-G1/8</del>	<del>6</del>	<del>G1/8</del>
<del>AP10-FC-06-G1/4</del>	<del>6</del>	<del>G1/4</del>
AP10-FC-06-03	6	G3/8

Order Code	ØD	Thread
<del>AP10-FC-06-04</del>	<del>6</del>	<del>G1/2</del>
<del>AP10-FC-08-01</del>	<del>8</del>	<del>G1/8</del>
<del>AP10-FC-08-03</del>	<del>8</del>	<del>G1/4</del>
<del>AP10-FC-08-03</del>	<del>8</del>	<del>G3/8</del>
<del>AP10-FC-08-04</del>	<del>8</del>	<del>G1/2</del>
AP10-FC-10-01	10	G1/8
AP10-FC-10-02	10	G1/4

Order Code	ØD	Thread
<del>AP10-FC-10-03</del>	<del>10</del>	<del>G3/8</del>
<del>AP10-FC-10-04</del>	<del>10</del>	<del>G1/2</del>
<del>AP10-FC-12-01</del>	<del>12</del>	<del>G1/8</del>
<del>AP10-FC-12-02</del>	<del>12</del>	<del>G1/4</del>
<del>AP10-FC-12-03</del>	<del>12</del>	<del>G3/8</del>
<del>AP10-FC-12-04</del>	<del>12</del>	<del>G1/2</del>



Inline flow Controller

Order Code	ØD
AP10-EC-04-00	4
AP10-EC-06-00	6

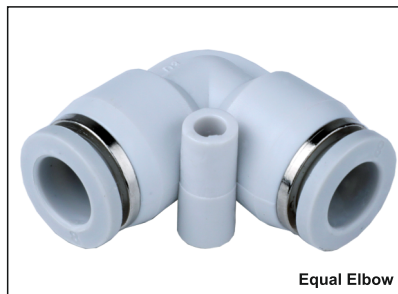
Order Code	ØD
AP10-EC-08-00	8
AP10-EC-10-00	10

Order Code	ØD
AP10-EC-12-00	12



Equal / Diff. Dia Straight Union

Order Code	Order Code
<del>AP10-EU-04-00</del>	<del>AP10-DU-06-04</del>
<del>AP10-EU-06-00</del>	<del>AP10-DU-08-06</del>
<del>AP10-EU-08-00</del>	<del>AP10-DU-10-08</del>
<del>AP10-EU-10-00</del>	<del>AP10-DU-12-10</del>
<del>AP10-EU-12-00</del>	<del>AP10-DU-14-12</del>
<del>AP10-EU-14-00</del>	<del>AP10-DU-16-14</del>
<del>AP10-EU-16-00</del>	



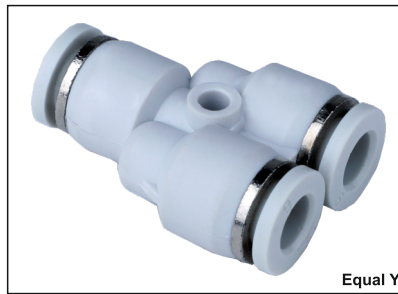
Equal Elbow

Order Code	ØD
<del>AP10-EL-04-00</del>	<del>4</del>
<del>AP10-EL-06-00</del>	<del>6</del>
<del>AP10-EL-08-00</del>	<del>8</del>
<del>AP10-EL-10-00</del>	<del>10</del>
<del>AP10-EL-12-00</del>	<del>12</del>
<del>AP10-EL-14-00</del>	<del>14</del>
AP10-EL-16-00	16



Equal / Diff. Dia Tee

Order Code	Order Code
<del>AP10-ET-04-00</del>	<del>AP10-DT-06-04</del>
<del>AP10-ET-06-00</del>	<del>AP10-DT-08-06</del>
AP10-ET-08-00	AP10-DT-10-06
AP10-ET-10-00	AP10-DT-10-08
AP10-ET-12-00	AP10-DT-12-08
AP10-ET-14-00	AP10-DT-12-10
AP10-ET-16-00	



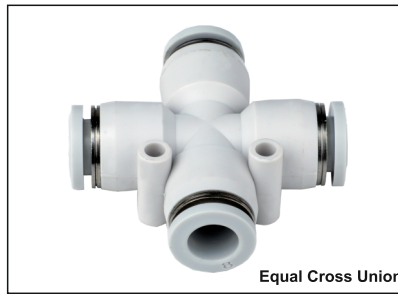
Equal Y

Order Code	ØD
AP10-EY-04-00	4
AP10-EY-06-00	6
AP10-EY-08-00	8
AP10-EY-10-00	10
AP10-EY-12-00	12
AP10-EY-14-00	14
AP10-EY-16-00	16



Bulk Head Union

Order Code	ØD
AP10-BH-04-00	4
AP10-BH-06-00	6
AP10-BH-08-00	8
AP10-BH-10-00	10
AP10-BH-12-00	12



Equal Cross Union

Order Code	ØD
AP10-CU-04-00	4
AP10-CU-06-00	6
AP10-CU-08-00	8
AP10-CU-10-00	10
AP10-CU-12-00	12



Conical Silencer

Order Code	Thread
AP10-SL-01	G1/8
AP10-SL-02	G1/4
AP10-SL-03	G3/8
AP10-SL-04	G1/2



Button Silencer

Order Code	Thread
AP10-BS-01	G1/8
AP10-BS-02	G1/4
AP10-BS-03	G3/8
AP10-BS-04	G1/2



**AP SERIES AIR SOURCE TREATMENT UNIT**

**Specifications**



FR+L

Model	AP2010-02	AP4010-04
Flow Rate (L/Min.)	500	3000
Port Size	G1/4"	G1/2"
Filter Efficiency	25μ	25μ
Working Pressure	1.0 MPa	1.0 MPa
Operating Temperature Range	-5 To + 60°C	-5 To + 60°C
Range of Adjustable Pressure	0.05-0.85MPa	0.05-0.85MPa
Recommended Oil Use	ISO VG 32	ISO VG 32
Container Material	Polycarbonate	Polycarbonate
Protective Cover	Available	Available



FR

Model	AP2000-02	AP4000-04
Flow Rate (L/Min.)	550	4000
Port Size	G1/4"	G1/2"
Filter Efficiency	25μ	25μ
Working Pressure	1.0 MPa	1.0 MPa
Operating Temperature Range	-5 To + 60°C	-5 To + 60°C
Range of Adjustable Pressure	0.05-0.85MPa	0.05-0.85MPa
Container Material	Polycarbonate	Polycarbonate
Protective Cover	-	Available



Regulator

Model	AR2000-02	AR4000-04
Flow Rate (L/Min.)	550	6000
Port Size	G1/4"	G1/2"
Working Pressure	1.0 MPa	1.0 MPa
Operating Temperature Range	-5 To + 60°C	-5 To + 60°C
Range of Adjustable Pressure	0.05-0.85MPa	0.05-0.85MPa

**AIRWIN ENGINEERS**

Plot No. G-613/6, Janani Industrial Zone,  
 Kishan Gate Road, Lodhika G.I.D.C., METODA,  
 Dist. Rajkot-360 021 (GUJARAT)  
 Mo. +91 99799 00957, +91 99799 00956  
 Email : airwinpneumatics@outlook.com - Web : www.airwinpneumatics.in

Auth. Distributor